

# Blowering Dam Safety Upgrade

State  
Water

<b>Location</b>	Tumut River, 13km upstream of Tumut in southern NSW
<b>Year dam completed</b>	1968
<b>Storage capacity</b>	1,628,000 megalitres
<b>Construction cost</b>	\$33 million, funded by the NSW State Government
<b>Construction dates</b>	Commence June 2009, expected completion 2011

## Why is State Water upgrading Blowering Dam?

State Water has embarked on the upgrade to ensure the dam meets new safety standards set by the NSW Dams Safety Committee and continues to serve the community. Blowering Dam is safe for day-to-day operations and can easily handle the worst floods on record and is being upgraded to reflect our improved ability to predict rainfall and understand extreme weather patterns.

## Project benefits

- Improved dam safety in the event of extreme flooding
- Improved flood mitigation
- Stimulating local economy by sourcing majority of workers, equipment and materials from Tumut area – approximately 30 jobs created by project



## Upgrade: Stage One

Stage One Works consist of constructing a parapet wall on top of the dam wall crest and raising the spillway training walls. The Full Storage Level and water delivery services to water users will not be affected by these Stage one works.

Macmahon Contractors Pty Ltd will undertake construction of stage one works, programmed to commence in June 2009. Site supervision will be undertaken by Professional Engineering Services (PES).

## Upgrade: Stage Two

Following the completion of Stage One Works, Stage Two will consist of a further, detailed review of the safety of the dam and will establish further actions, in consultation with the Dams Safety Committee and other stakeholders.

# Blowering Dam Safety Upgrade

## Community Involvement

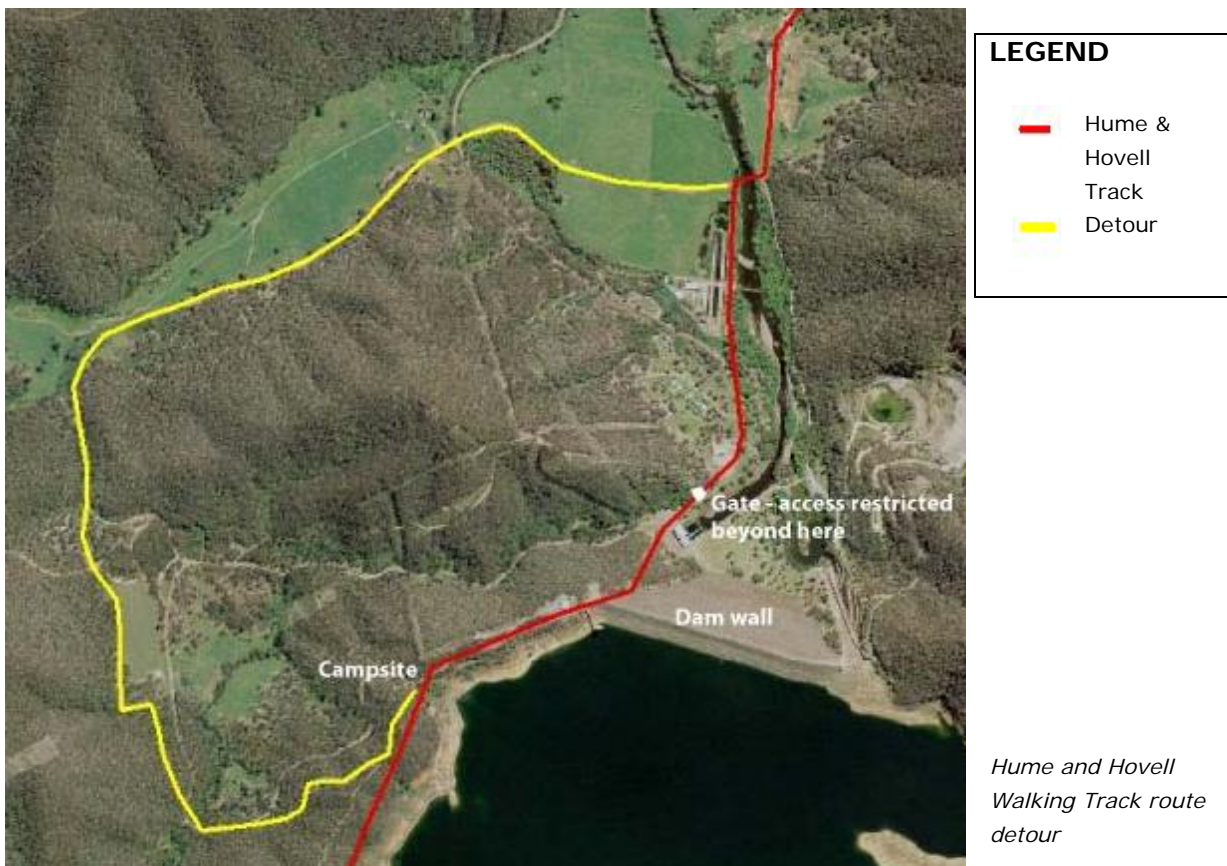
Extensive community consultation and communication has occurred prior to construction and will continue through the construction phase. Local landholders and Tumut Council have been consulted regarding construction activities.

## Impacts of construction

**Traffic:** A Traffic Management Plan will be implemented during construction. Access to the dam will be prohibited beyond the gate on the Blowering Dam Access Road shown in the following diagram.

**Hume and Howell Track:** The track will be detoured as indicated below. Signs and directions have been provided for bushwalkers.

**Brandy Mary Park:** Access to Brandy Mary Park and the dam crest will be restricted following 29 June 2009 for public safety.



## Key Project Contacts:

Jay Sinha, Project Manager State Water Phone (02) 9354 1004	Barry Brunsdon Storage Custodian State Water Phone (02) 6947 3610	Steve Carmichael Site Manager PES Phone 0408 694 952
--	--	---